

# NORTHERN RIVERS

NORTHEAST PARENT & CHILD SOCIETY  
PARSONS CHILD & FAMILY CENTER

*SATRI Training & Research*

## TRAINING NEWS LINK

**November 2017 - December 2017**

### Internal Trainings

#### First Aid/CPR

November 13, 2017 -First Aid/CPR 9:00am-3:00pm at SATRI

December 11 , 2017 -First Aid/CPR 9:00am-3:00pm at SATRI

#### TCI Training (Therapeutic Crisis Intervention)

##### Full TCI:

December 7, 8, 14, & 15 - TCI Full Training 8:30am-4:30pm at SATRI

##### Update TCI:

November 8, 2017 -TCI Update Training 8:30am-4:30pm at Children's Home Schenectady

November 12, 2017 -TCI Update Training 9:00am-5:00pm at SATRI

November 15, 2017 -TCI Update Training 8:30am-4:30pm at SATRI

December 13, 2017 -TCI Update Training 8:30am-4:30pm at SATRI

#### Med Admin

November 9, 2017 - Med Admin 9:30am-11:00am at SATRI

December 7, 2017 - Med Admin 9:30am-11:00am at SATRI

In this Issue:	Page
Internal Training	1-2
External training	3
Miscellaneous	4-6

## *Internal Trainings*

### Clinical

November 3, 2017– Service Planning Referral to Discharge - 9:00am-12:00pm at SATRI (3 CEU's)

November 8, 2017 – Understanding & Supporting LGBT Youth 830aam-12:30pm at SATRI (4 CEUs)

November 17, 2017 - Healing from trauma/Protective Factors - 9:00am-12:00pm at SATRI (3 CEU's)

December 1, 2017 –Helping families learn about feelings/emotions - 9:00am-12:00pm at SATRI (3 CEU's)

December 5, 2017 - Trauma Informed Care 9:00am –12:00pm at SATRI (3 CEU's)

December 5, 2017 - Person Centered Care 1:00pm –4:00pm at SATRI (3 CEU's)

December 8, 2017 –Building family Cohesion/Resilience - 9:00am-12:00pm at SATRI (3 CEU's)

December 15, 2017 –Developing Creative Way to Tell Stories - 9:00am-12:00pm at SATRI (3 CEU's)

### SafeTALK

November 28, 2017 -SafeTALK 9:00am-12:00pm at SATRI (3 CEU)

December 19, 2017 -SafeTALK 9:00am-12:00pm at SATRI (3 CEU)

## **Working with Alcohol and Substance Affected Families (WASAF)**

After an outpouring of interest from staff and because of the high incidence of alcohol and substance use within families of children in our care, SATRI is excited to announce two additional offerings of our **Working with Alcohol and Substance Affected Families (WASAF)** workshop. Interested participants may choose to attend either Wednesday, December 6; or Tuesday, December 12; from 9 a.m. to 4:30 p.m. at the SATRI facility on Academy Road.

WASAF is designed to enhance caseworker skills in addressing the dynamics and needs of families that are affected by alcohol and other substance use disorders. The course covers the nature and causes of dependency, stages of chemical dependency, recovery, and relapse, and the implications of chemical dependency for child welfare caseworkers. Participants will also learn about the various treatment options, and recognize their role in referring families to these services.

Course topics contained in the one-day WASAF curriculum include:

- Attitudes, Values, and Beliefs
- The Biopsychosocial Model of Chemical Dependency
- AOD-Affected Family Systems
- Assessing Families Affected by AOD
- Treatment, Resources, Recovery, and Relapse

This training will be opened up to both Northern Rivers employees and external organizations, and we anticipate a strong response. Our employees will receive priority registration through October 31, with registration opened to all on November 1. If you attempt to register after November 1, your spot may not be guaranteed.

Please register for this training in the LMS, <https://northernrivers.csod.com>

## External Trainings



SAMHSA Webinar: Parity: Access to Mental Health and Substance Use Care **Date: Tue, Nov. 7, 3 p.m. ET**

**Register:** [https://events-na3.adobeconnect.com/content/connect/c1/986655080/en/events/event/shared/1700946820/event\\_landing.html?sco-id=2022594196& charset =utf-8](https://events-na3.adobeconnect.com/content/connect/c1/986655080/en/events/event/shared/1700946820/event_landing.html?sco-id=2022594196& charset =utf-8)

Despite passage of a federal parity law, many Americans still struggle to find quality, affordable mental health and substance use care. Many people struggle to find in-network care and face restrictions on the type of care they need. In addition, many people are also unclear of their rights under the law. This webinar will explore the current status of the federal parity law and discuss strategies for educating people about the law and share tools that were developed by the White House and SAMHSA to help ensure people get the right care at the right time.

### **Youth with Sexual Behavior Problems: Practical Resources and Activities for Therapists Working with Youth and Their Families**

**Presenter:** Rene McCreary, MS, LPC

**NEARI Press**

**Date:** Tuesday, November 14, 2017

**Time:** 3:00 PM - 4:00 PM EDT

**Description:** This webinar is based off Rene McCreary's upcoming guide "Youth with Sexual Behavior Problems: A Practical Guide for Therapists Working with Youth and Their Families," intended for therapists who work with youth who exhibit Sexually Problematic Behaviors (SPBs) and their families. This book is based on cutting-edge research regarding the most effective therapeutic interventions for treating youth with SPBs, and is ideal for both new therapists establishing practice, as well as seasoned counselors engaging a new population. The guide is designed for therapists to feel more equipped to support families with youth who are struggling with SPBs, and includes practical activities for reducing SPBs, strengthening warm family interactions, and improving parents' supervision and communication practices.

Assessment and safety planning, boundaries, feelings identification, distress tolerance, impulse control, cognitive distortions, family team building, sexuality, and extra family enrichment ideas are addressed. All activities in the book aim to support the family in building a common language to promote conversations that are safe, supportive, relationship-building, and "boundaryful."

**Learning Objectives:** Participants will:

1. Learn the value of using research-based methodology when working with children and youth with sexual behavior problems
2. Learn three specific research-based interventions
3. Be inspired to support the families to increase supported interactions and to identify the strengths of the children and their families

**Register:** <https://register.gotowebinar.com/register/8720017099325805058>

## Is Training Required?

People often ask us “**is this training required**”, and indeed our regulatory agencies often do require specific trainings be taken. However, SATRI literally offers hundreds of courses every year and while not always required, they are offered to help support and inform the work we do. Most important the overall vision at **SATRI** is to support [lifelong learning](#). Lifelong learning is the "ongoing, voluntary, and self-motivated" pursuit of knowledge for either personal or professional reasons. Lifelong learning enhances social connection, an involved informed citizenry, and personal development. In our professional life it supports self-sustainability, as well as competitiveness and employability. The Delors Report entitled, “Learning: The Treasure Within” proposed an integrated vision of education based on two key paradigms; [lifelong learning and the four pillars of learning](#). It argued that formal education tends to emphasize the acquisition of knowledge to the detriment of other types of learning essential to sustaining human development. It stressed the need to think of learning over the life course, and to address how everyone can develop relevant skills, knowledge and attitudes for work, citizenship and personal fulfillment. The four pillars of learning are:

- Learning to know**
- Learning to do**
- Learning to be**
- Learning to live together**

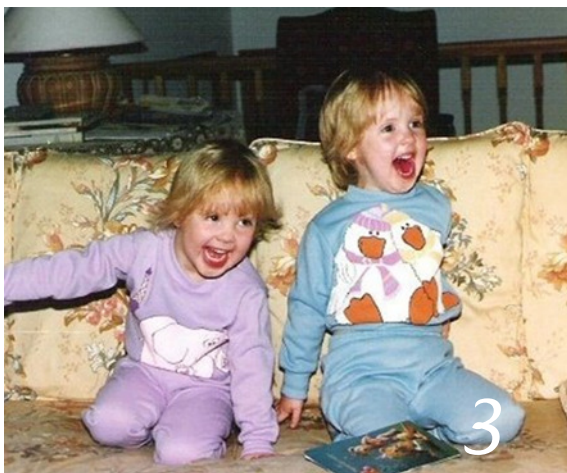
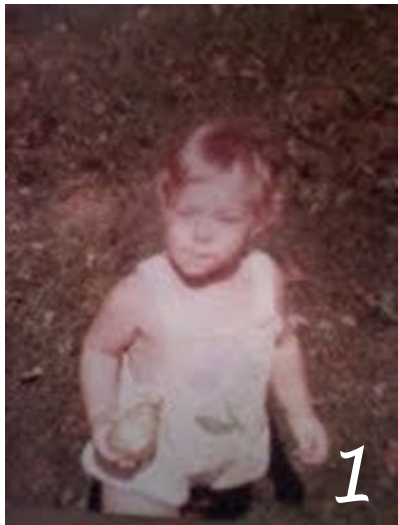
**SATRI** will continue to support learning in the agency and to pursue topics and subjects areas that will inform and enhance the work we do. If there are additional topics that you would like to see presented please let us know.

Suggestions can be sent to Sheila Frank via Email:

[\*Sheila.frank@parsonscenter.org\*](mailto:Sheila.frank@parsonscenter.org)

Play along.....

# Can you guess who?



Play along.....

Can you guess who (page 2)?



ANSWER KEY: 1- Greyson Burns, 2- Brandon Howlett, 3- Sarah Kane, 4- Brittany Beaudette, 5- Jillian Gecewicz, 6- Marylyne Brady-Johnson, 7- Tabetha Zostan, 8- Sheila Frank, 9- Kendra Turcotte